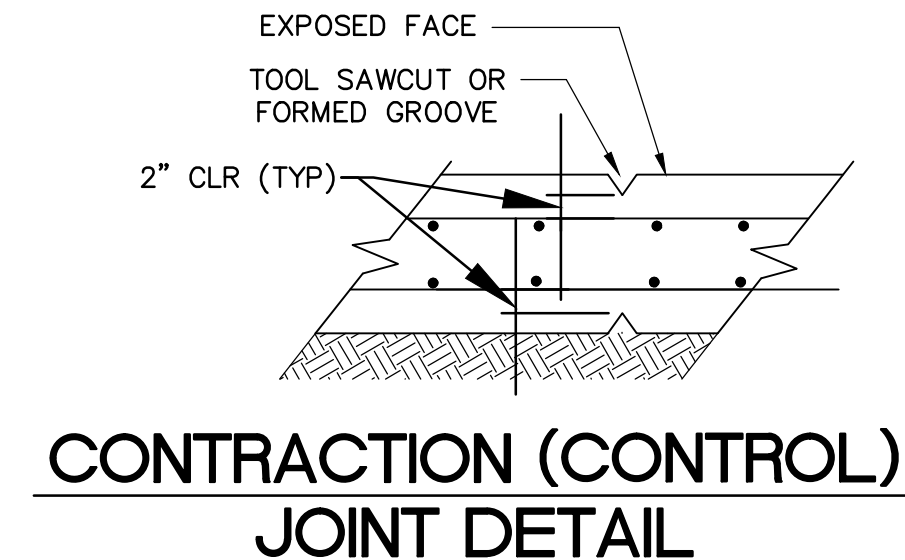
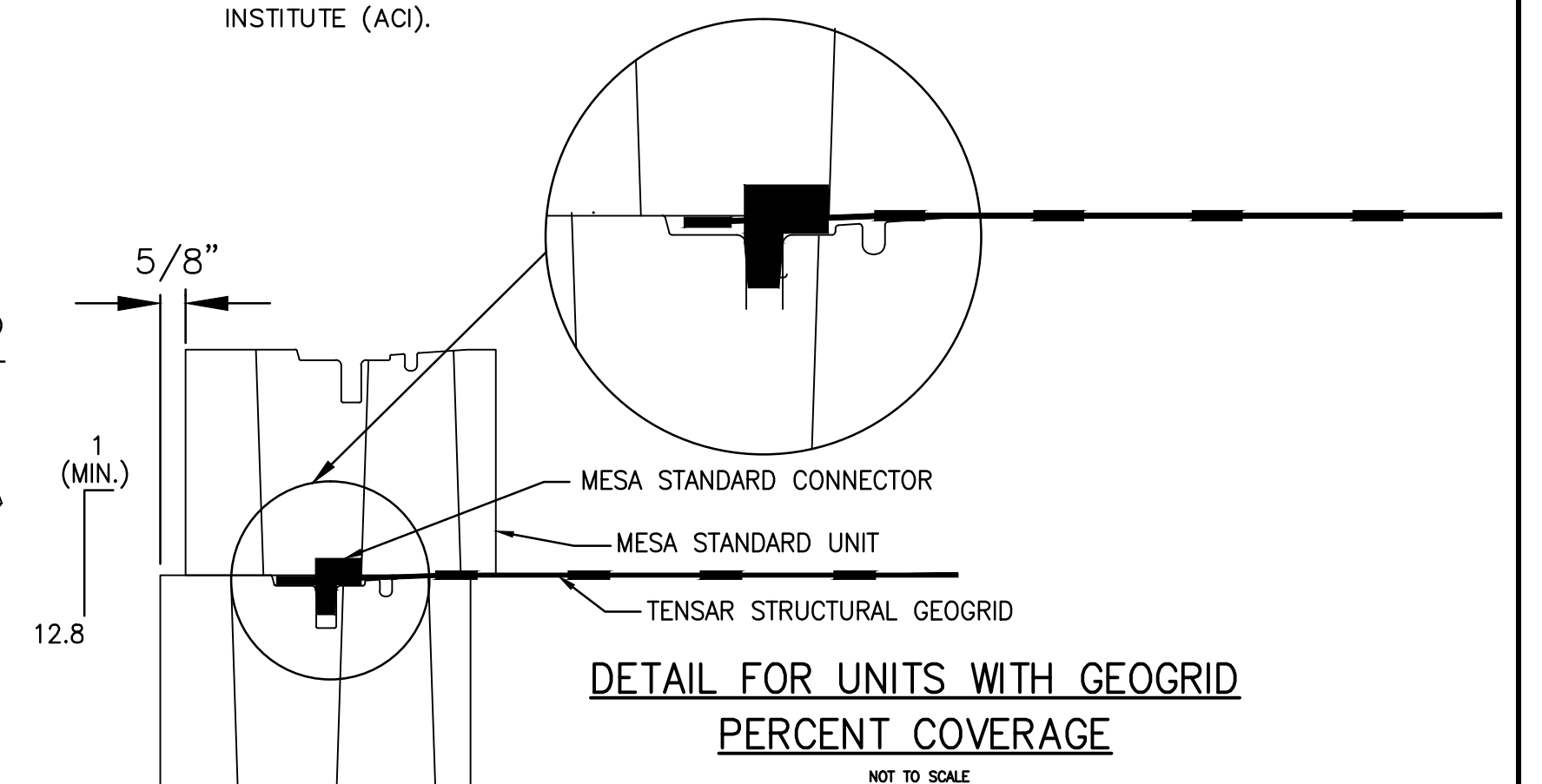
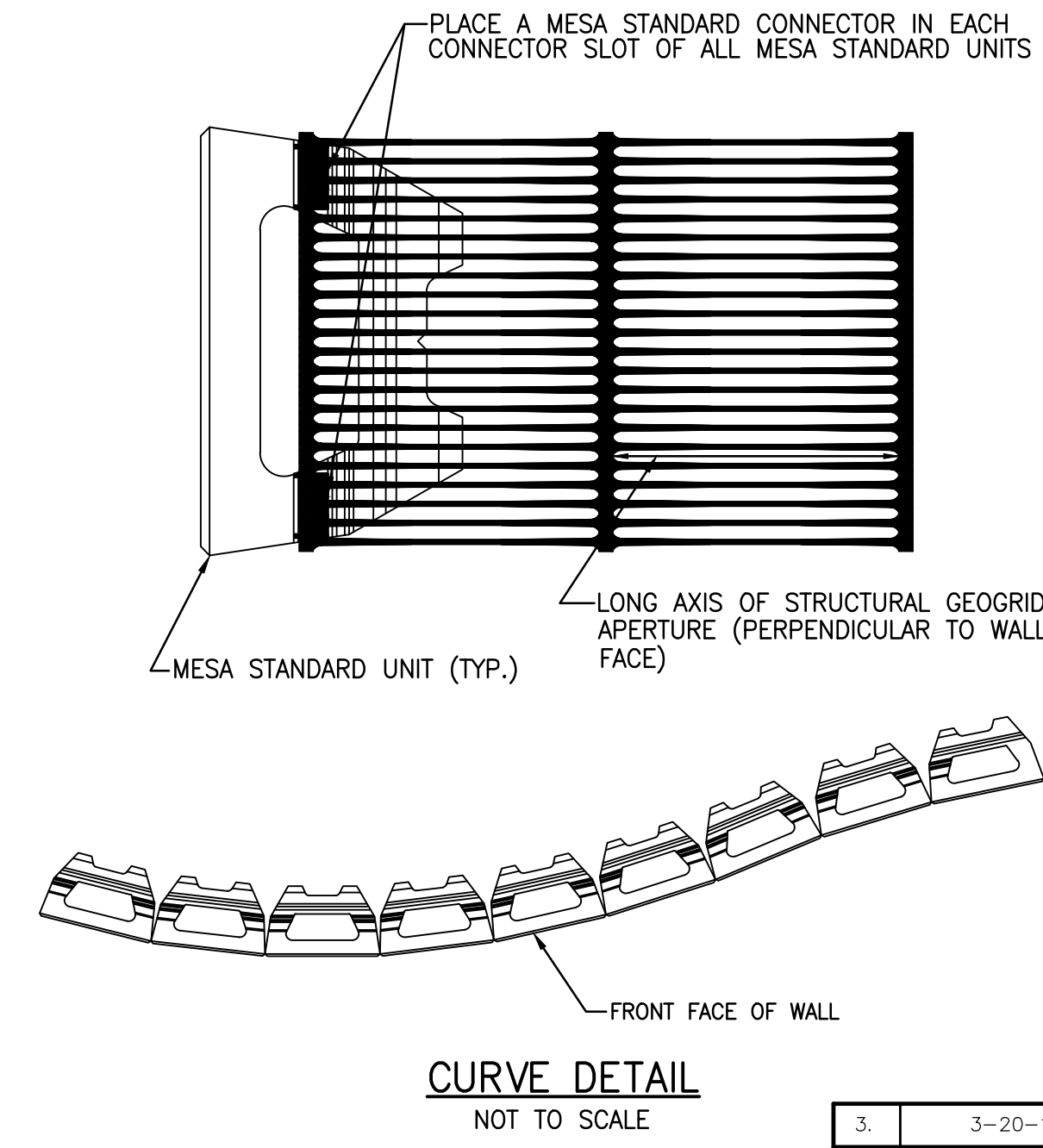
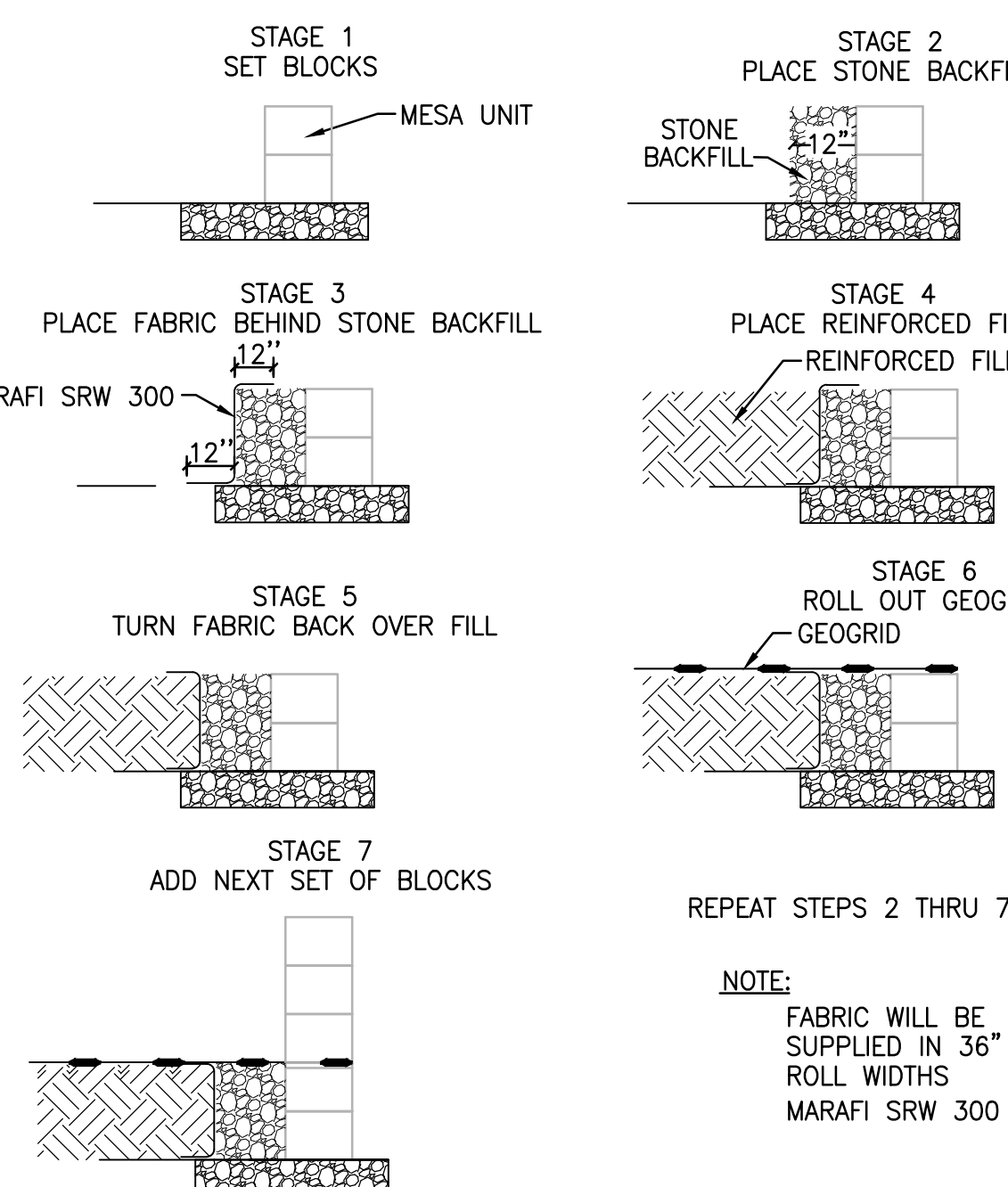
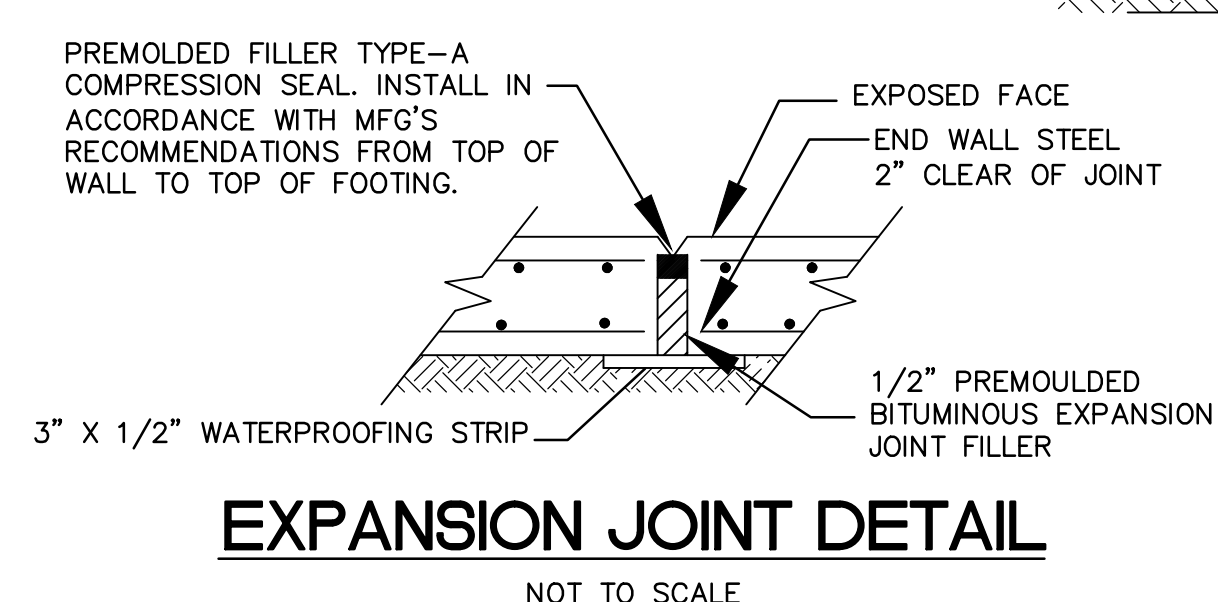
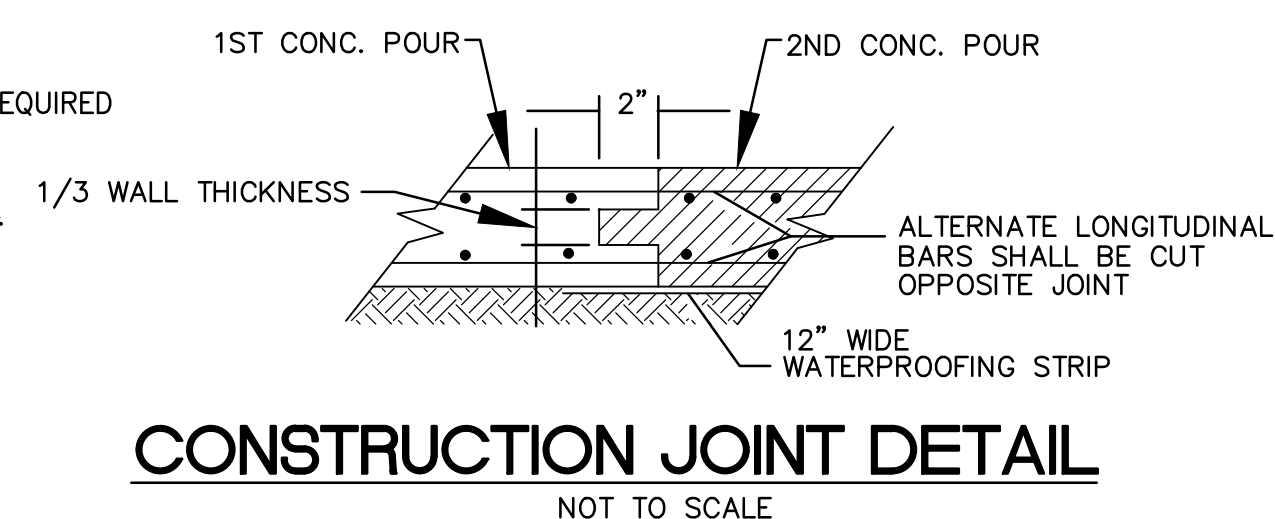



ASTM STANDARD		REINFORCING BARS	
INCH POUND SIZE DESIGNATION	DEVELOPMENT LENGTH	LAP "B" SPLICED "S"	NOMINAL DIAMETER (IN.)
#3	1'-0"	1'-4"	0.375
#4	1'-4"	1'-8"	0.500
#5	1'-6"	2'-0"	0.625
#6	1'-10"	2'-4"	0.750
#7	2'-1"	2'-8"	0.875
#8	2'-6"	3'-3"	1.000
#9	3'-2"	4'-1"	1.125

- ### INSTALLATION PROCEDURE
1. Install each course of the Mesa Segmental Block units between the top of the last geogrid placed and the bottom the next layer of geogrid above as shown on the approved construction drawings. The facing units shall be aligned and leveled in accordance with wall installation section.
 2. Prior to placing the select backfill, the Mirafi SRW 300 geotextile shall be placed behind the units such that a minimum of (12) inches of material is turred into the fill at the top and the bottom. The geotextile shall then be adjusted to present a relatively smooth surface.
 3. The select well graded sand and gravel (SP) backfill shall then be placed and compacted in accordance with the approved construction drawings and project specifications.
 4. After the select (SP) backfill has been compacted and properly graded for the installation of the next layer of geogrid reinforcement, the geotextile on the top units shall be pulled back onto the backfill.
 5. Install the geogrid reinforcement and repeat the process commencing with item 1.
 6. After the last level of primary geogrid reinforcement has been placed install the remaining courses of Mesa Segmental block units except for the last standard course and the cap units, in accordance with the details on the approved construction drawings.

GENERAL NOTES:

1. RECYCLE (RCA) CONCRETE LEVELING PAD ($8' - \frac{3}{4}"$ - $2' - \frac{3}{4}"$ RCA MATERIAL) SHALL BE CONSTRUCTED ON WELL GRADED SAND AND GRAVEL, COMPACTED TO 95% STANDARD PROCTOR.
2. LEVELING PAD FOOTING SHALL BE SITUATED ON FIRM SOIL WITH A MINIMUM BEARING CAPACITY OF 1.5 TSF.
3. REINFORCED ZONE (EXCAVATION AREA BETWEEN NON-WOVEN FILTER FABRIC AND THE RETAINED ZONE) WALL TO BE FILLED WITH WELL GRADED COMPACTED SAND AND GRAVEL (SP) IN 6" LIFTS TO 95% STANDARD PROCTOR.



3.	3-20-18	NO REVISIONS THIS SHEET	CCV
2.	6-16-14	NO REVISIONS THIS SHEET	CCV
1.	6-3-14	REVISED AS PER VILLAGE COMMENT LETTER DATED 5-15-14	JRW
No.	DATE	REVISION	BY:
<p style="text-align: center;">WALL SECTIONS AND DETAILS VILLAGE VISTAS SITUATED AT THE INCORPORATED VILLAGE OF PORT JEFFERSON TOWN OF BROOKHAVEN, SUFFOLK COUNTY, NEW YORK S.C.T.M No. 0206-016-08-LOTS 7, 8, 1, 8, 2, 9, 10, 13, 1, 18, 23, 24, 25 & P/O WILLOUGHBY STREET</p>			DWN. BY: CCV
			DATE: 4-25-14
			CHK'D BY: TCD
			DATE: 4-25-14
			JOB No.: 03309
			FILE: CADD: 03309AMMEND-RET2
 <p style="text-align: center;">NELSON & POPE ENGINEERS • DESIGNERS • SURVEYORS 572 WALT WHITMAN ROAD, MELVILLE, N.Y. 11747-2188 (631) 427-5665 FAX (631) 427-5620</p>			SCALE: AS SHOWN
			SHEET: 19 OF 19